

Important Cultural Property.  
Kosode (Kimono) with Pine Bark Lozenge Bands of  
Intricate Patterns. 17th century.



Important Cultural Property.  
Square Dishes with Hanashan and Shide.  
17th century.

KYOTO  
NATIONAL MUSEUM



Important Art Object.  
Dōtaku Bell with Flowing Water Pattern.  
2nd-1st century BCE.

# Museum Guide 2019

## Bringing Japanese Culture to the World

The Kyoto National Museum was founded as the Kyoto Imperial Museum on May 5, 1897. The museum grounds lie on the east side of the city in the famed Higashiyama district, nestled among the sites of many ancient temples and shrines.

The Kyoto National Museum's visitors come from all over Japan and from around the world. Located in the country's historical and cultural center, the museum strives to show these visitors the appeal and beauty of Japan.

Seated Amida  
(Amitabha) Buddhas  
with Welcoming Descent  
and Meditation Mudras.  
12th century.



National Treasure.  
Toiletries Box with Pine and Camellias  
(from the Sacred Treasures of Asuka Shrine).  
14th century.



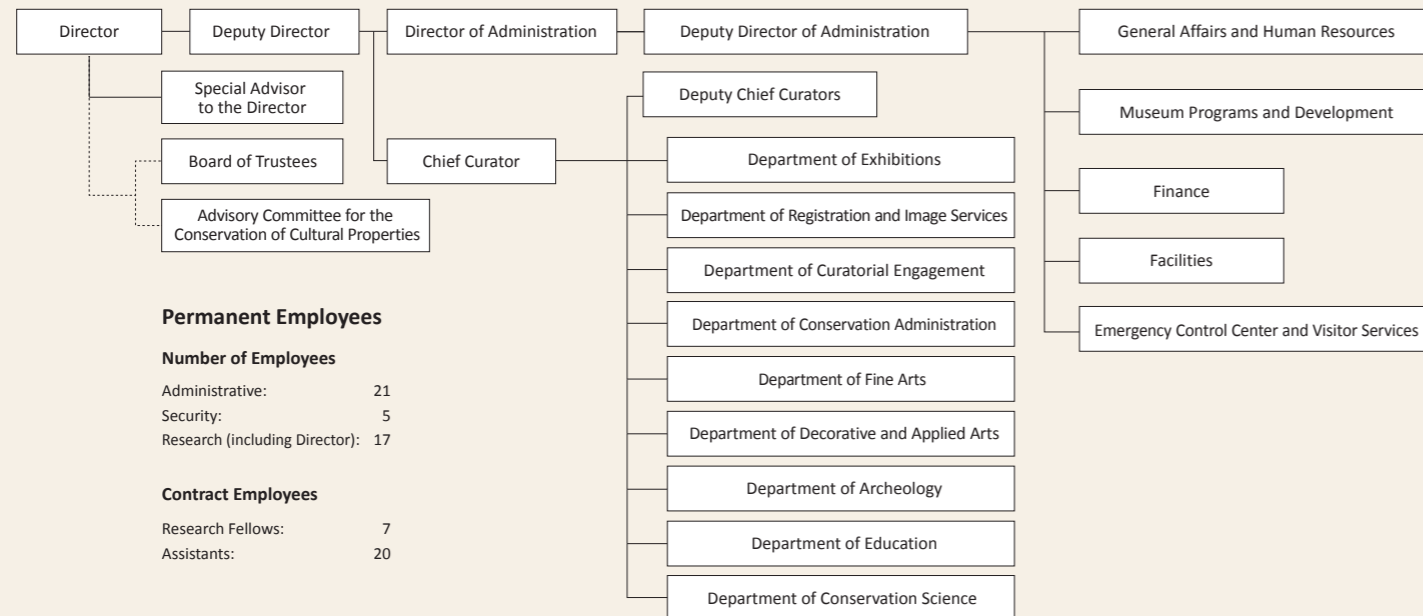
Important Cultural Property. Okuni Kabuki. 17th century.



National Treasure.  
Long Sword (Tachi) signed  
"Norikuni." 13th century.



## Organizational Chart



### Permanent Employees

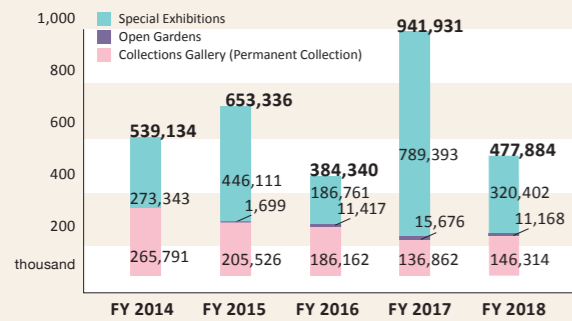
#### Number of Employees

Administrative:	21
Security:	5
Research (including Director):	17

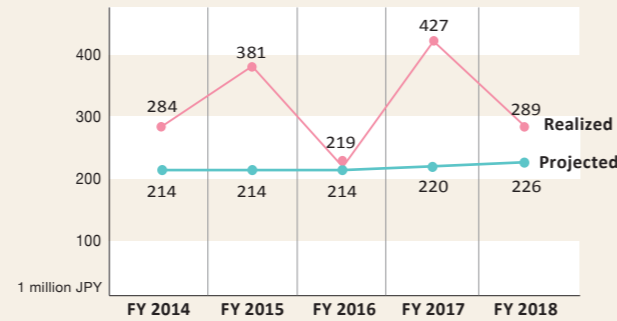
#### Contract Employees

Research Fellows:	7
Assistants:	20

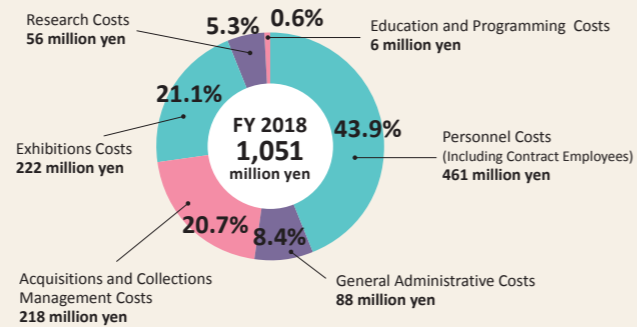
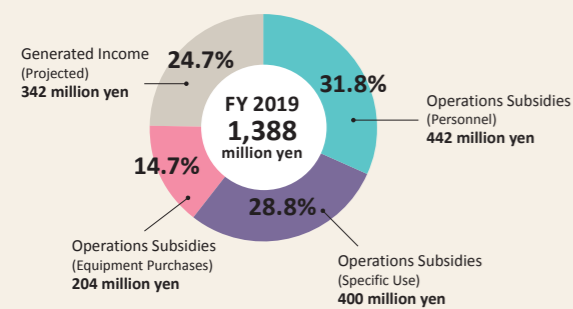
## Visitor Numbers



## Generated Income



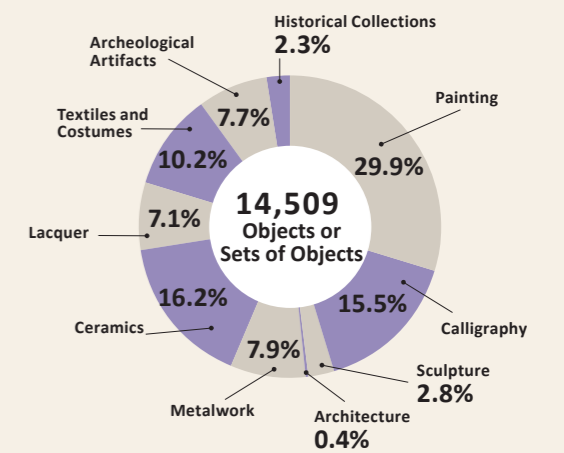
## Budget



## Acquisitions and Stewardship

The museum's collection focuses on the history of Kyoto and its environs. Acquisitions are made by both purchase and donation. The Kyoto National Museum houses numerous treasures entrusted to it on long-term loan from temples, shrines, and private collections. Storing these collections at the museum ensures a safe environment for the objects and also increases opportunities to exhibit them to the public.

## Collection (as of April 1, 2019)



## Exhibitions

During the ongoing restoration of the Meiji Kotokan, the museum holds both thematic exhibitions drawn from the permanent collection as well as special exhibitions in the Heisei Chishinkan Wing.



## Conservation

The museum has been involved in the conservation of many genres of art for decades. In recent years, it has employed a variety of cutting-edge scientific technologies to support more traditional methods of conservation.



Conservation: preliminary analysis

Conservation treatments

## Research

Research is essential to all the museum's activities, including acquisitions, exhibitions, conservation, educational programming, and more. Museum research often takes place over many years, leading to long-term loans to the museum of important artworks or to their exhibition in museum galleries.



A temple inventory

Important Cultural Property.  
Letter from Emperor Ogimachi to Kujō Tanemichi, 16th century.



## Educational Programming and Volunteers

The museum develops educational materials to help visitors engage with cultural properties in fun, thought-provoking ways. It also hosts lectures for those who wish to learn more.

The museum carries out outreach programs in elementary and middle schools within the city of Kyoto. These classes, taught by specially trained undergraduate and graduate students, make use of high-resolution digital reproductions of museum artworks for object-oriented teaching.



Shell-matching game workshop



Outreach classes for elementary and middle schools

## Engagement and Partnerships, Local and International

The museum maintains partnerships with other Kyoto museums, with the Graduate School of Kyoto University, and with the Musée Guimet in Paris. It collaborates with these institutions on matters of regional, scholarly, and international engagement.



The museum finalizes a partnership among four Kyoto museums



A workshop for graduate students specializing in object conservation

## Events and Space Rental

The museum hosts special events geared towards those who rarely come to museums. Areas of the museum are also available as rental space.



Reception in the Grand Lobby of the Heisei Chishinkan Wing



Dance performance by geisha and maiko



Kyoto National Museum  
527 Chaya-cho, Higashiyama-ku  
Kyoto 605-0931 Japan  
Phone: +81 (0)75-525-2473

